

Kantara: Technology, Policy, and Compliance for Identity Services in 2010 & Beyond

Seminar at the RSA Conference 2010

Lena Kannappan

FuGen Solutions, Inc.

March 1, 2010

FuGen
Solutions

FuGen Solutions Overview



□ Focus:

- Delivering federation lifecycle management services to enable governments, enterprises and their partners reduce the cost and complexity of federated identity management and improve project success.

□ Experience



Information Card Foundation



□ Leading customers



Product Portfolio



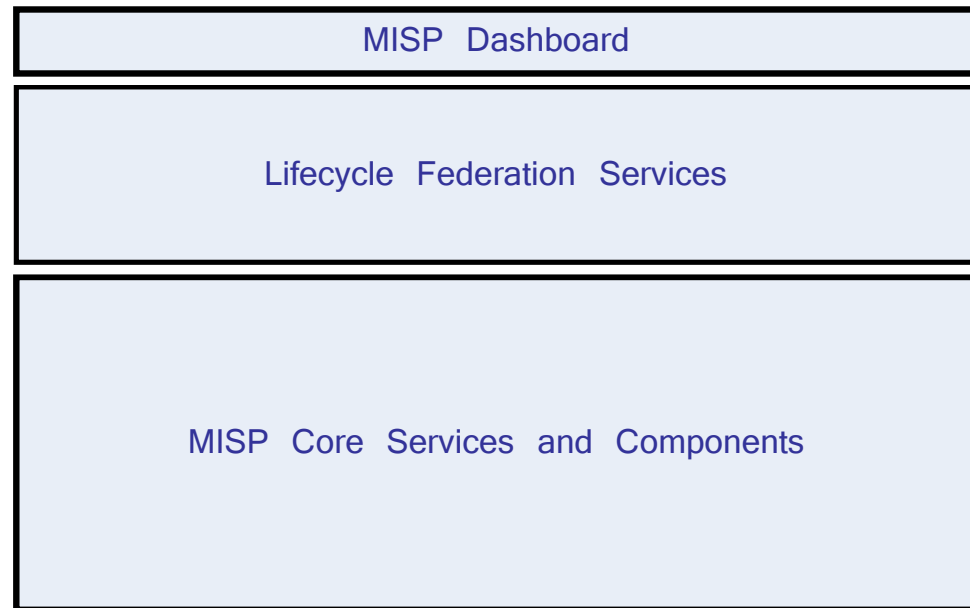
FEDERATION ONBOARDING SERVICES	<p>Federation Environment Setup & Scenario Development and Customization</p> <p>Development and Refinement of Federation Strategy & Policies</p> <ul style="list-style-type: none">• Federation Workshops and Training• Federation Readiness Assessment• Policies & Guidelines formulation• Federation Profile creation <p>Annual Partner Identity Assurance</p> <p>Partner Qualification, Federation Certification and Interoperability Testing :</p> <ul style="list-style-type: none">• Testing and Federation Certification• Partner Access to Portal• Scenario Storage and Benchmarking Service• Continuous Health Monitoring and Correlated Reporting
HOSTED FEDERATION SERVICES FOR SMBs	<p>SaaS SP Services for SMBs who don't have federation infrastructure</p> <ul style="list-style-type: none">• Hosted SP federation layer• Monitoring, Auditing, Logging and Reporting• Partner Access to Portal Dashboard• Testing and Federation Certification

FuGen MISP™ Delivery Platform

(A Cloud Services Platform)



- ❑ Protocol Agnostic
- ❑ Multi-IdM Support
- ❑ Endpoint Virtualization
- ❑ Lifecycle Federation Services



Scalable, flexible, and extensible service-in-the-cloud model to meet current and future customer needs of scaling and managing their federations

e-Gov Focus For Demonstrations



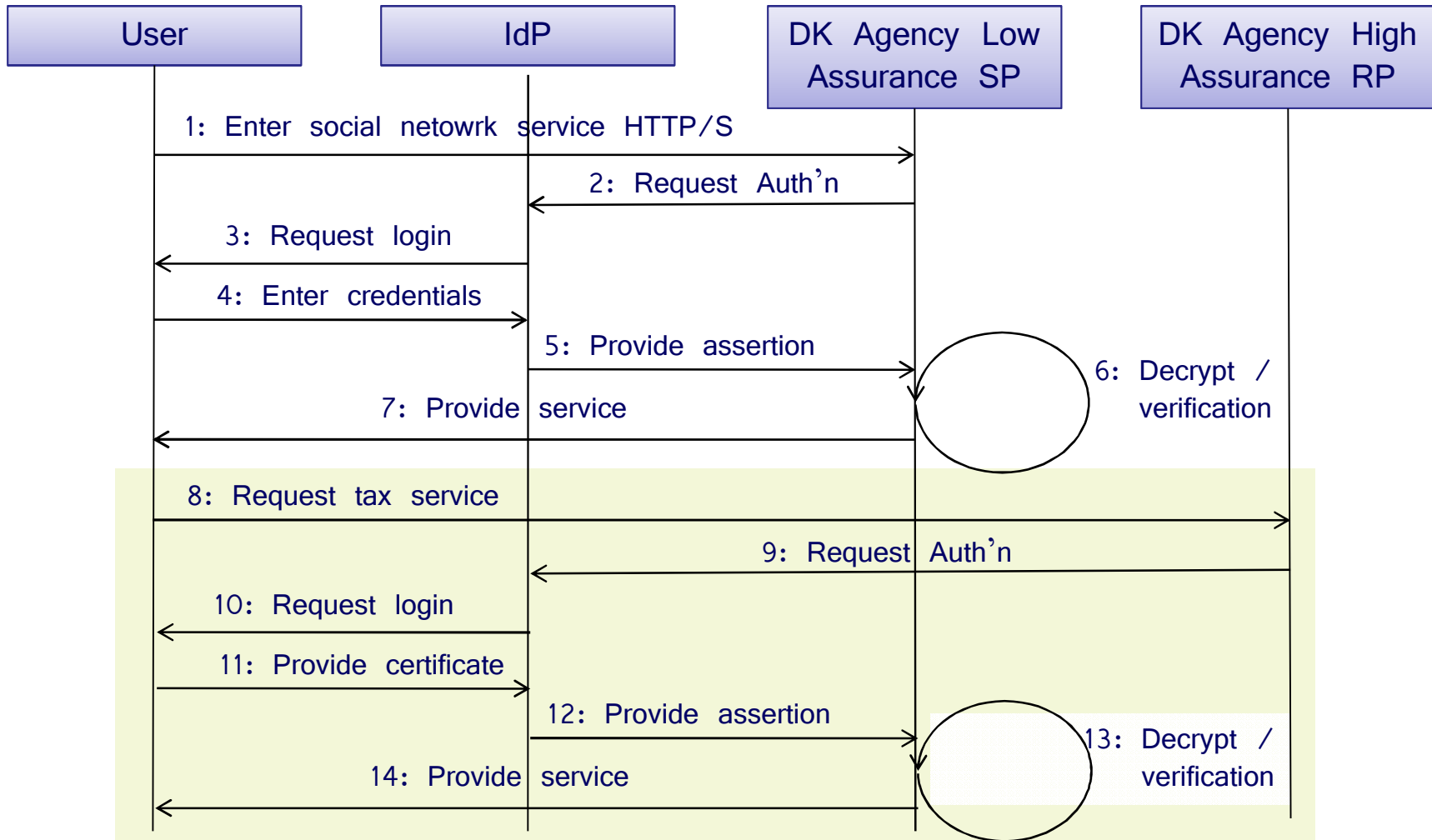
- ❑ Denmark scenario based on SAML 2.0 with step-up authentication
 - Deployment validation compliance according to Kantara e-Gov 1.5, OIO SAML 2.0, GSA SAML 2.0, and the draft ICAM SAML 2.0 profiles
- ❑ Italian scenario based on Information Card
 - Deployment validation compliance according to ICAM IMI 1.0 profile
- ❑ Denmark scenario based on OpenID
 - Deployment validation compliance according to ICAM OpenID 2.0 profile



e-Gov SAML 2.0	Information Cards	OpenID 2.0
Denmark Gov't Scenario	EU Gov't Citizen Service	Application
Run Scenario	Run Scenario	Run Scenario
e-gov 1.5 Compliance Validation Report	ICAM IMI 1.0 Certification Report	ICAM OPENID 2.0 Compliance Report
OIO SAML 2.0 Certification Report		
GSA SAML 2.0 Certification Report		
ICAM SAML 2.0 Certification Report		

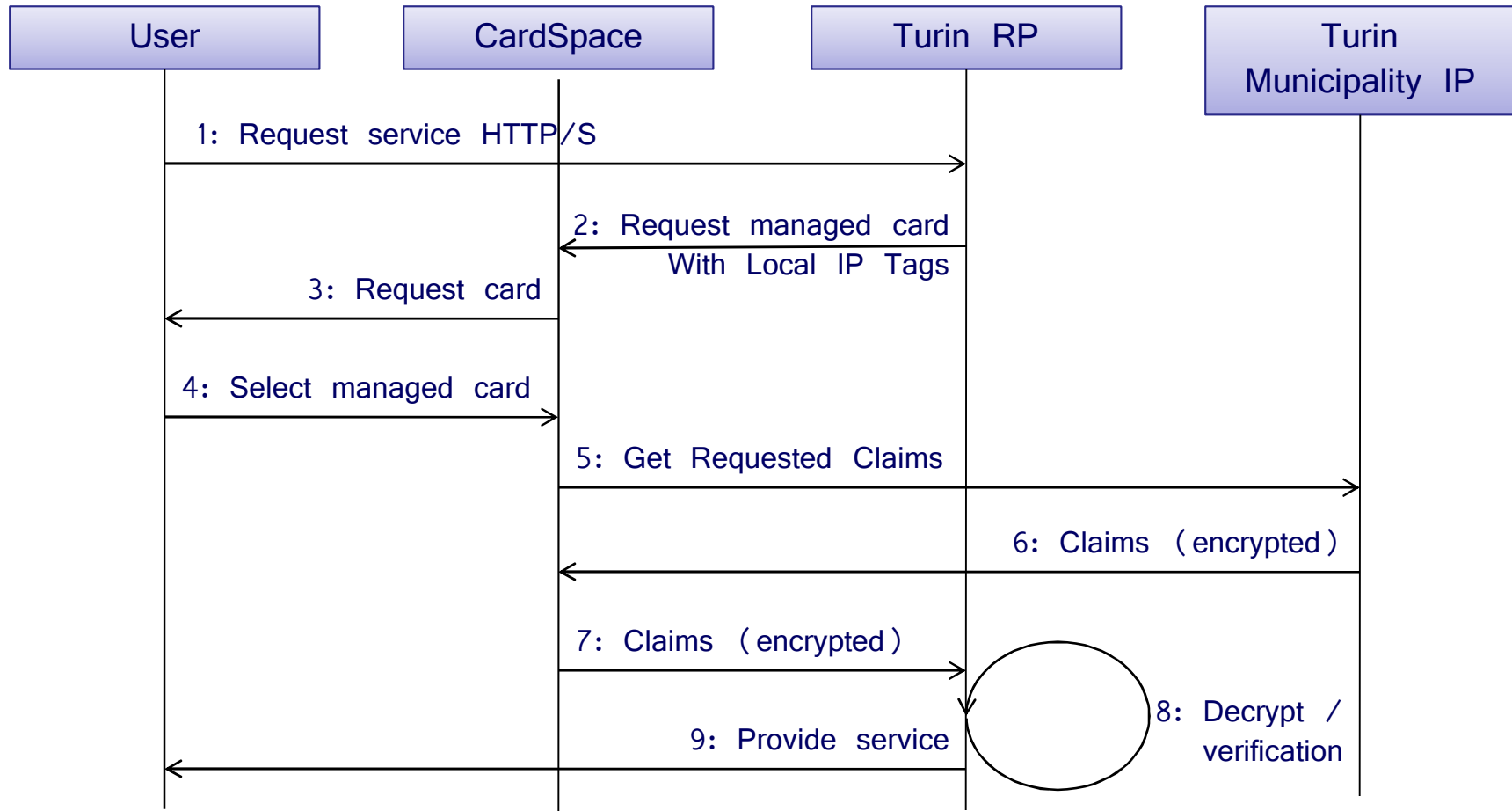
Appendix

SAML 2.0 Government Profiles Compliance Validation



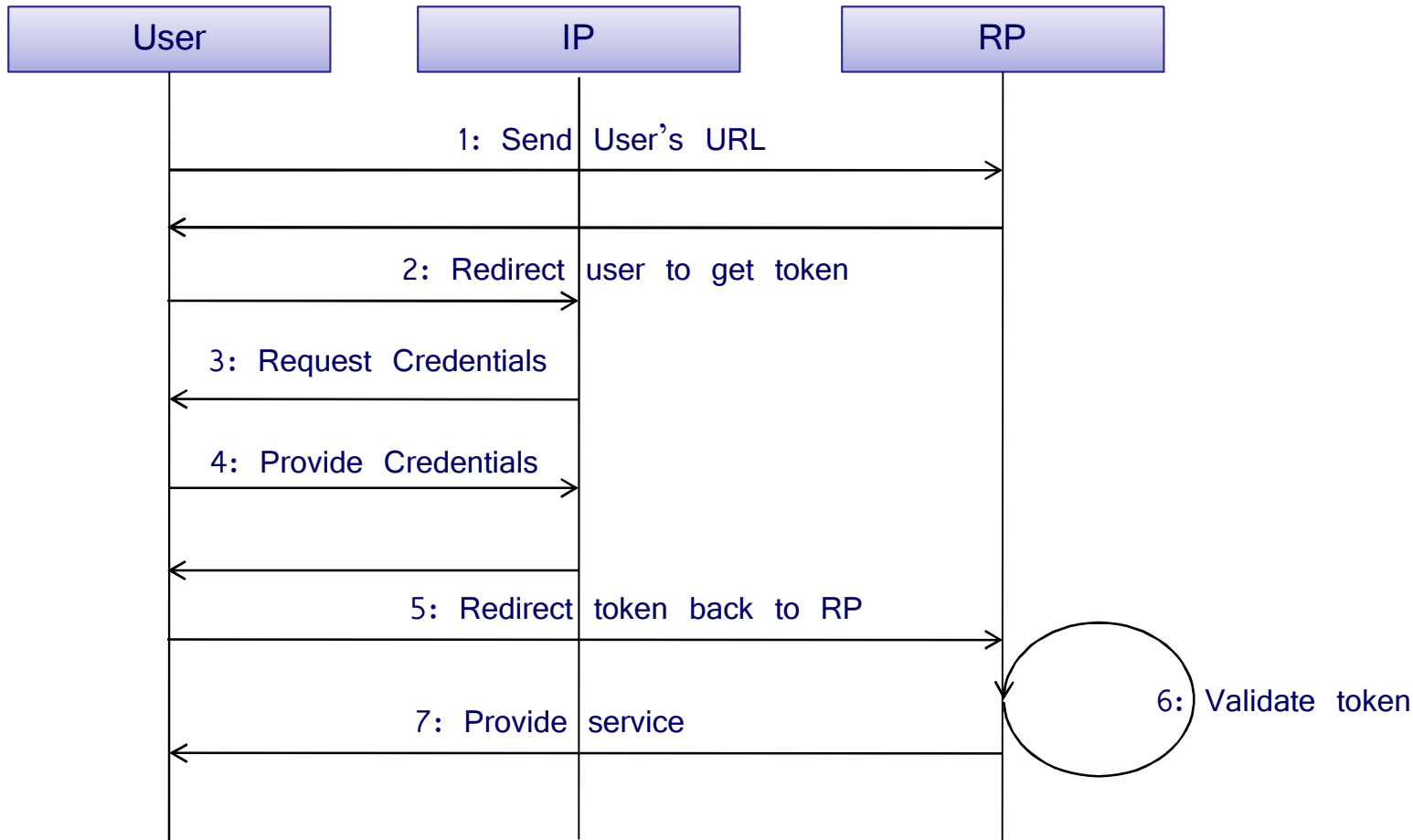
This demonstration shows a Denmark citizen accessing their social network application and from there, their tax services with a step-up authentication. The whole scenario runs within FuGen's MISPTM virtual environment and validated against several SAML 2.0 profiles.

Information Card/ ICAM IMI 1.0 Compliance Validation



This demonstration shows a Turin (Italy) agency providing access with a card issued by the local municipality. The whole scenario runs within FuGen's MISPTM virtual environment and validated against the ICAM IMI 1.0 profile

OpenID/ ICAM OpenID 2.0 Compliance Validation



This demonstration shows a Denmark citizen accessing their social network application provided by the Denmark government. The scenario has FuGen's MISPTM virtual environment hosting the RP and an external IP compliant with the ICAM OpenID profile.